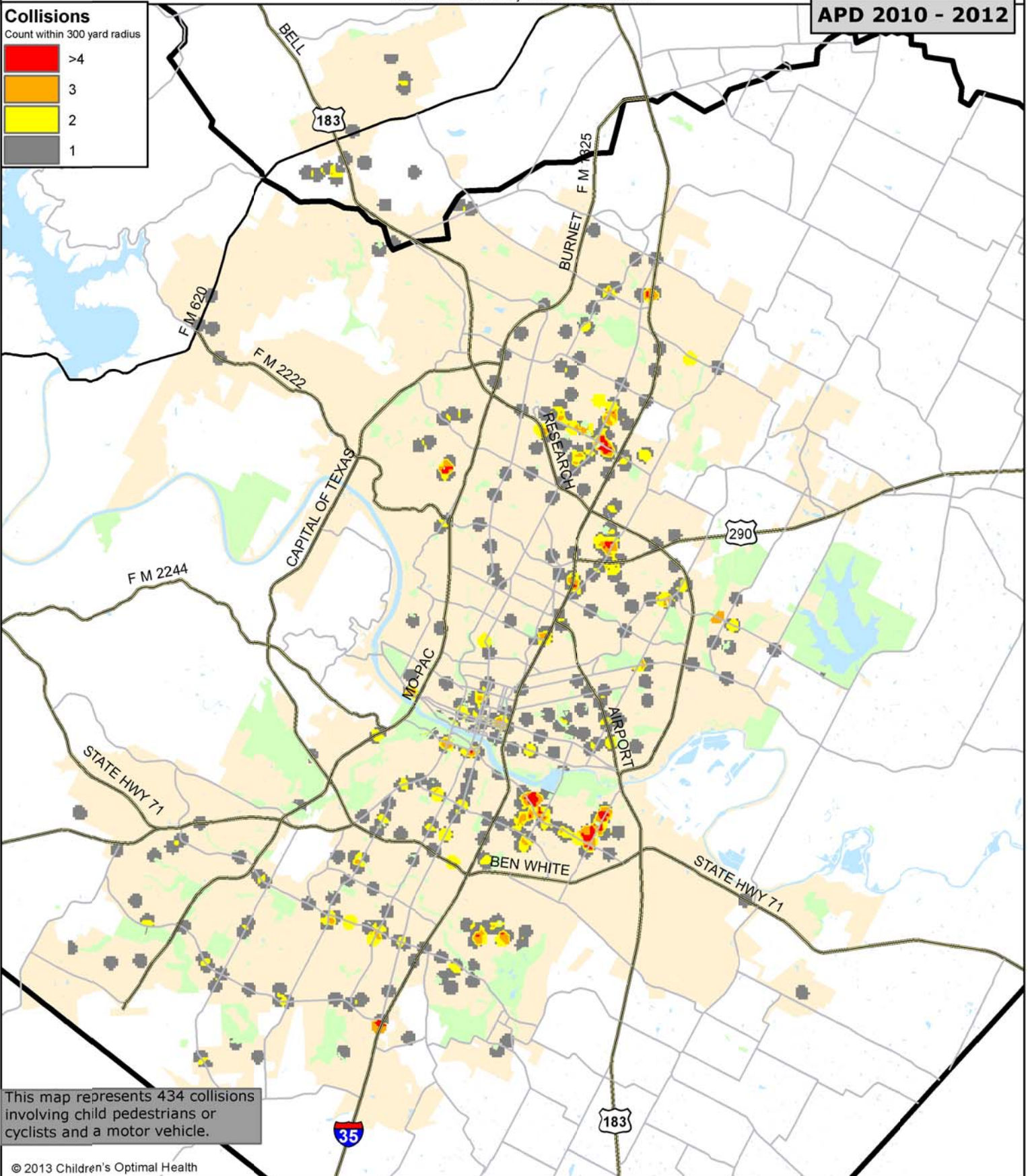
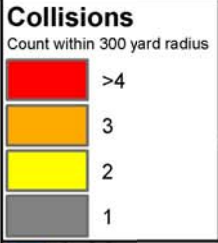


Locations of collisions between child pedestrians or cyclists and motor vehicles

Area within 2008 APD jurisdiction is shaded tan

APD 2010 - 2012



This map represents 434 collisions involving child pedestrians or cyclists and a motor vehicle.

© 2013 Children's Optimal Health

children's optimal health

Maps produced by Children's Optimal Health display visual correlations among multiple layered datasets. They do not represent cause and effect relationships.

Data Sources:
Austin Police Department 2010 - 2012;
City of Austin 2009;

0 1 2 3 4 Miles



Octavio Ulloa
08/15/2013